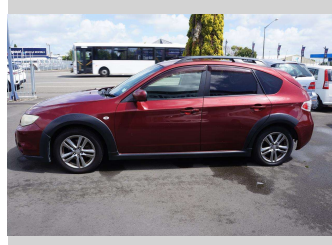
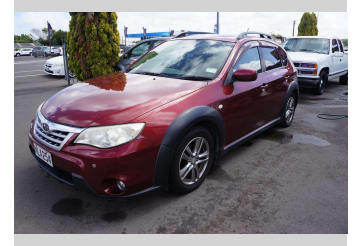


2010 Subaru Impreza XV



Purchase Price

\$5,995

Includes GST, Registration & Licensing

Finance may be available on this vehicle. Ask one of our friendly staff for more information.



Gain peace of mind with Mechanical Breakdown Insurance. **Ask us how.**



Top features

- » 16 Valve
- » ABS Brakes
- » Air Bag(s)
- » Air Conditioning
- » All Electrics
- » Alloys
- » Car Stereo
- » Central Locking
- » Central Locking
- » Climate Control
- » EFI
- » Electric Mirrors
- » Electric Mirrors
- » Electric Windows
- » Power Steering
- » Rear Wiper
- » Remote Locking
- » Roof Rack

Body Style

Hatchback

Odometer

166,775 km

Engine

1500 cc

Fuel Type

Petrol

Transmission

Auto, Front Wheel

Wheels

-

VIN

7AT0GF09X20045508

Interior

-

Safety



Based on 2023 UCSR rating for 07-11 models

Reg No.

NLA254

Ext Colour

Red

History

-

Seats

-

CO2 Emissions

★★★★☆☆

190 grams/km

Energy Economy

★★★★☆☆

Annual fuel cost of \$3,100

7.9L per 100km

Cost per year is an estimate based on petrol price of \$2.80 per litre and an average distance of 14000 km. Emissions and Energy Economy figures standardised to 3P WLTP.

Stock ID: 111586



Midway Auto Wholesale | Phone 06 357 9000 | Email brady.k@xtra.co.nz
400 Rangitikei Street, Palmerston North 4410, New Zealand
www.autowholesale.co.nz